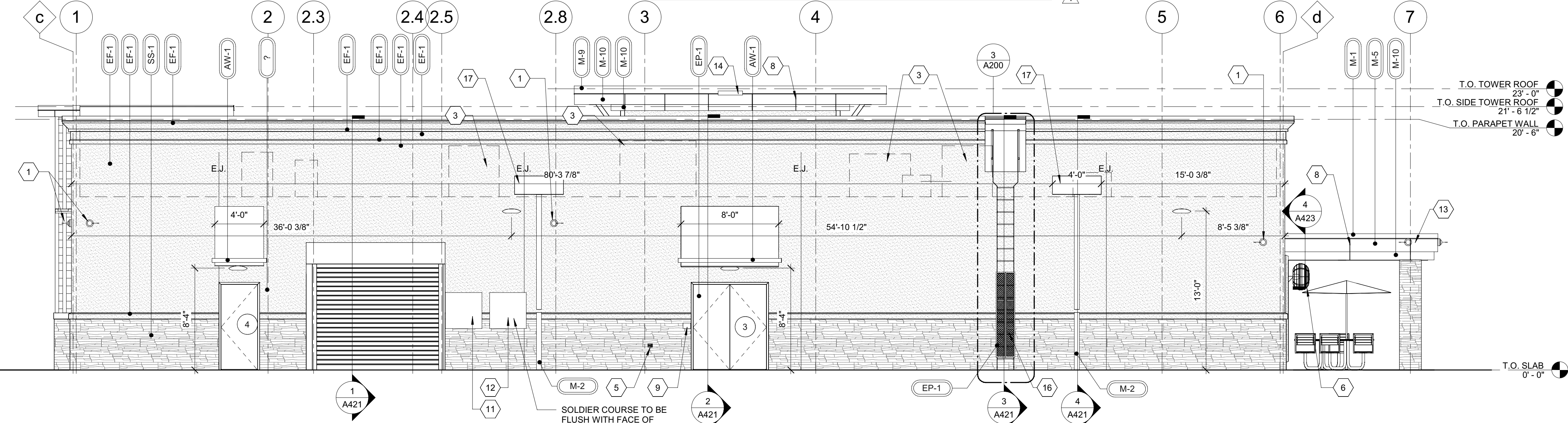
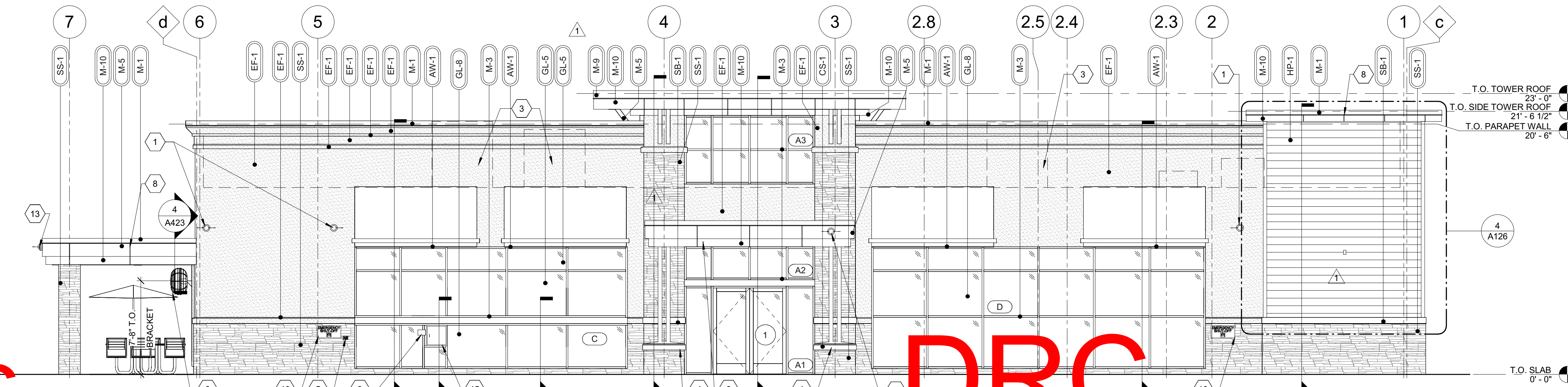


4 LEFT ELEVATION  
3/16" = 1'-0"

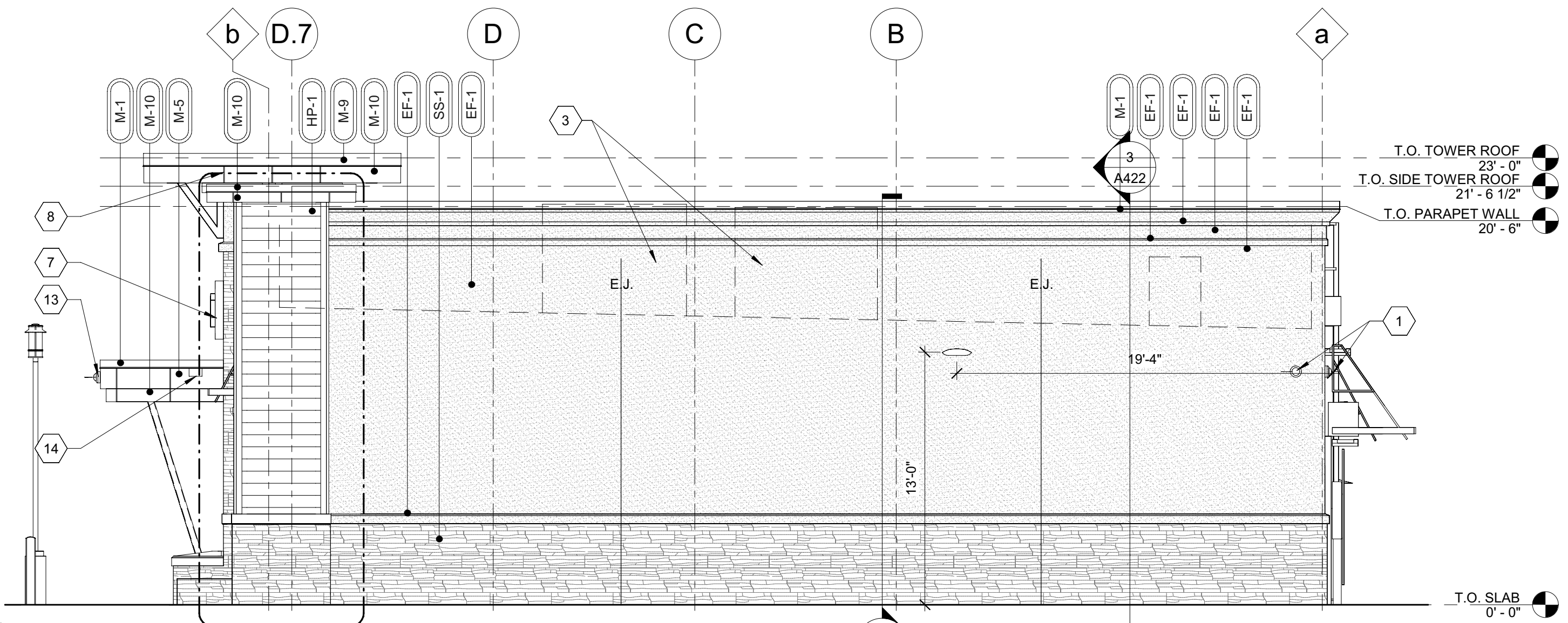


2 REAR ELEVATION  
3/16" = 1'-0"



1 FRONT ELEVATION  
3/16" = 1'-0"

- GENERAL NOTES**
1. CONTRACTOR SHALL VERIFY ALL EXTERIOR MATERIAL COLOR AND FINISHES WITH THE ARCHITECT. ANY DISCREPANCIES NOTED SHALL BE BROUGHT TO THE ATTENTION OF THE ARCHITECT FOR CLARIFICATION.
  2. PROVIDE EXPANSION JOINTS (EJ) AT ALL LOCATIONS WHERE EIFS ABUTS A DISSIMILAR MATERIAL OR WHERE OTHERWISE REQUIRED BY MANUFACTURER.
  3. PROVIDE EXPANSION JOINTS (EJ) AS LOCATED ON EXTERIOR ELEVATION. SPECIFICATION FOR JOINT SEALANT SHALL BE 'LIGHT BRONZE' SL-2 BY TREMCO.
  4. MAXIMUM SPACING OF EXPANSION JOINTS SHALL BE 15'-0" O.C. OR PER MANUFACTURER RECOMMENDATION.
  5. REFER TO LIGHTING PLANS FOR LIGHTING FIXTURE LOCATION AND SCHEDULE.
  6. REFER TO STRUCTURAL DRAWINGS FOR JOIST AND BEAM BEARING AND FOUNDATIONS.
  7. REFER TO REFLECTED CEILING PLANS FOR COMPLETE DIMENSIONS OF ACM JOINT LOCATIONS.
  8. SIGNAGE UNDER A SEPARATE PERMIT.



3 RIGHT ELEVATION  
3/16" = 1'-0"

ELEVATION KEYNOTES		
1	WALL MOUNTED SECURITY CAMERA	
2	NOT USED	
3	MECHANICAL EQUIPMENT BEYOND	
4	REFER TO DETAILS ON SHEET A431 FOR CAST STONE SHAPE	
5	HOSE BIB; REFER TO PLUMBING DRAWINGS	
6	PATIO FAN; REFER TO SPECIFICATIONS	
7	NOT USED	
8	ACM PANEL REVEAL LINE. REFER TO REFLECTED CEILING PLAN FOR DIMENSIONS	
9	INTERCOM AND SPEAKER	
10	EMERGENCY FUEL SHUT OFF SWITCH. MOUNT TOP OF SIGN AT 48" A.F.F.	
11	LOCATION OF ELECTRICAL SERVICE C/T AND METER	
12	GENERATOR TAP BOX - SEE ELECTRICAL FOR LOCATION	
13	SECURITY CAMERA MOUNTED TO FASCIA	
14	OVERFLOW SPILL SCUPPER	
15	PACKAGE PASSER. REFER TO EQUIPMENT PLAN	
16	PROVIDE METAL GUARD GATE AT LADDER TO 8'-0" A.F.F. WITH LOCKING HASP	
17	4'-0" WIDE X 1'-7" HIGH SCUPPER. REFER TO DETAILS 9 & 10 ON SHEET A201	

EXTERIOR MATERIAL SCHEDULE		
AWNING	ALUMINUM AWNING	SELECTED BY RACETRAC
AW-1		
CAST STONE		
CS-1	CONTINENTAL CAST STONE OR APPROVED OTHER	COLOR 1102 NATURAL TUSCAN; MORTAR COLOR 'LIGHT BUFF'. SEAL WITH (SL-5) SEALANT.
CEMENT BOARD		
HP-1	JAMES HARDIE	PAINT SHERWIN WILLIAMS SEALSIN #7675. BLIND FASTEN AND STAGGER PLANKS PER MANUFACTURERS RECOMMENDATION
EIFS		
EF-1	STO	STO THERM CI
GLAZING		
GL-5	1-5/16" IMPACT RATED INSULATED LAMINATED GLAZING	CLIMATE ZONES 1 OR 2: IGU 0.28 U-FACTOR, SHGC PF>0.25+0.27 (1/4" CLEAR TEMPERED 70XL LOW-E #2 + 1/2" AIR + 1/4" CLEAR + 0.90 SG + 1/4" CLEAR) OR APPROVED ALTERNATE. SEE A600
GL-7	1-5/16" IMPACT RATED ACID ETCHED INSULATED GLAZING	CLIMATE ZONES 1 OR 2: IGU 0.28 U-FACTOR, SHGC PF>0.25+0.27 (1/4" CLEAR TEMPERED 70XL LOW-E #2 + 1/2" AIR + 1/4" CLEAR SATIN ETCHED #3 + 0.90 SG + 1/4" CLEAR) OR APPROVED ALTERNATE. SEE A600
GL-8	1-5/16" IMPACT RATED ACID ETCHED INSULATED GLAZING W/ OPAQUE FILM	CLIMATE ZONES 1 OR 2: IGU 0.28 U-FACTOR, SHGC PF>0.25+0.27 (1/4" CLEAR TEMPERED 70XL LOW-E #2 + 1/2" AIR + 1/4" CLEAR SATIN ETCHED #3 + 0.90 SG + 1/4" CLEAR) OR APPROVED ALTERNATE. SEE A600

METAL		
M-1	PREFINISHED 4" 2-PIECE COMPRESSION METAL COVER	METAL TO MATCH STOREFRONT COLOR DARK BRONZE
M-2	COLOR DARK BRONZE.	METAL TO MATCH STOREFRONT COLOR DARK BRONZE.
M-3	VISTAWALL (OR APPROVED ALTERNATE)	FG-5750T IMPACT RESISTANCE STOREFRONT SYSTEM (OR APPROVED ALTERNATE)
M-5	ALCOA	REYNOBOND PE
M-7	VERSATEX	WP4 TONGUE AND GROOVE
M-9	PREFINISHED 8" 2-PIECE COMPRESSION METAL COVER	METAL TO MATCH STOREFRONT COLOR DARK BRONZE
M-10	ALCOA	REYNOBOND PE
PAINT		
EP-1	SHERWIN WILLIAMS	EXTERIOR PAINT TO SW #7020 "BLACK FOX"
ROOFING		
DURO	DUROLAST	50 MIL MEMBRANE ROOFING SYSTEM
STACKED STONE		
SS-1	BORAL	ASPEN COUNTRY LEDGESTONE
STONE BAND		
SB-1	BORAL	TUSCAN LINTEL CHAMPAGNE
TREX		
TX-1	SELECT COMPOSITE	1"X6"
WINDOW FILM		
WF-1	WINDOW FILM; 3M PRESTIGE 70 SOLAR FILM	SEE A600 FOR WINDOW FILM LOCATIONS

ISSUE/REVISION RECORD	
DATE	DESCRIPTION
03/05/21	PERMIT SET
04/23/21	REV1-AHJ COMMENTS
06/16/21	REV2-AHJ COMMENTS
12/15/21	REV3-AHJ COMMENTS

STANDARD PLAN BULLETINS (SPB) MODIFY THE PROTOTYPE SERIES SET NOTED ABOVE. THE LISTED SPB REPRESENTS THE LATEST MODIFICATION INCORPORATED TO THIS PROTOTYPE SERIES SET AT ORIGINAL RELEASE. THE ISSUE/REVISION RECORD COLUMN ABOVE LISTS ANY REVISIONS OR SPB INCORPORATED IN THIS SET AFTER THE ORIGINAL RELEASE. CONTACT RACETRAC ENGINEERING AND CONSTRUCTION FOR ANY SUBSEQUENT BULLETINS NOT INCORPORATED HEREIN.

